

The Staying Connected Initiative comes to Lamoille County by Neahga Leonard

The Staying Connected Initiative is a coalition of agencies concerned with wildlife connectivity in New England. The aim is to maintain connectivity amongst the large core habitat blocks from Tug Hill west of the Adirondacks in upstate New York through Vermont, New Hampshire, and Maine, with links across the border into Canada.

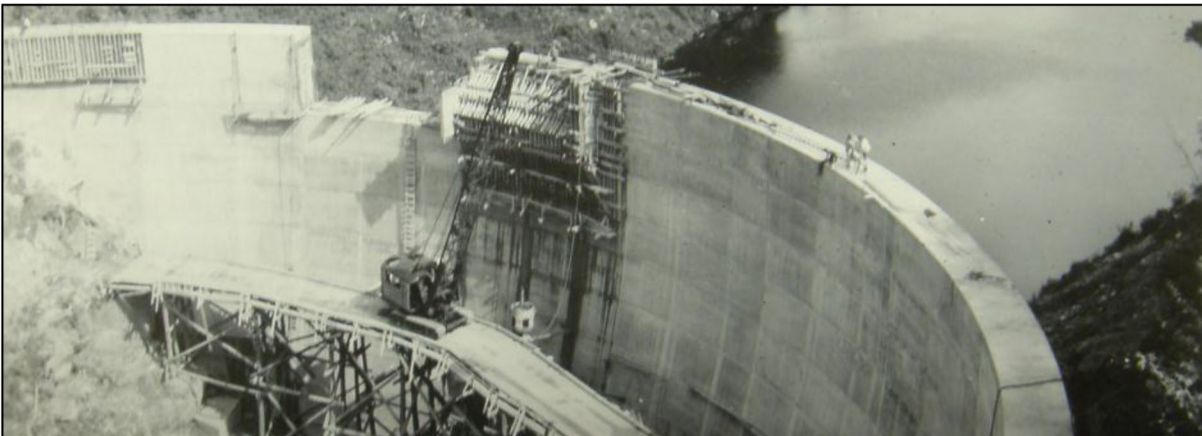
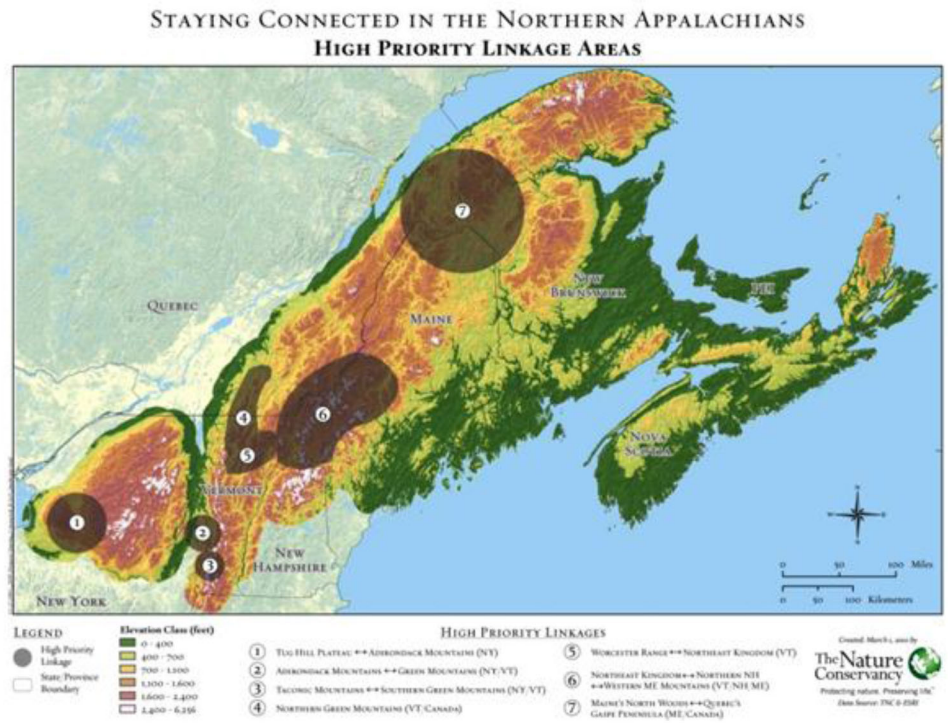
Of seven priority linkage areas, five fall at least partially within Vermont, making it the keystone state in this linkage model. In Vermont, we operate via regionally placed Linkage Coordinators. The role of these coordinators is to work with local stakeholders; town planning commissions, land owners, businesses, outdoor activity groups, land trusts, and other non-profits to promote locally directed long-term land management planning that takes into account the needs of wildlife and humans.

We want to see people connecting with each other, their communities, and their landscape.

The coordinator works toward this goal by providing local support for people and organizations seeking more information on wildlife and land management issues. This support includes technical assistance for developing management plans to organizing presentations, hosting educational events, leading field-walks, and more.

For more information contact your local Linkage Coordinator:

The Linkage Coordinator for the Worcester – Northeast Kingdom region is Neahga Leonard. He may be contacted at Neahga.Leonard@gmail.com or via phone at: 802-595-1107.



Historical Perspective: This photograph was taken during the construction of the Green River Reservoir Dam.